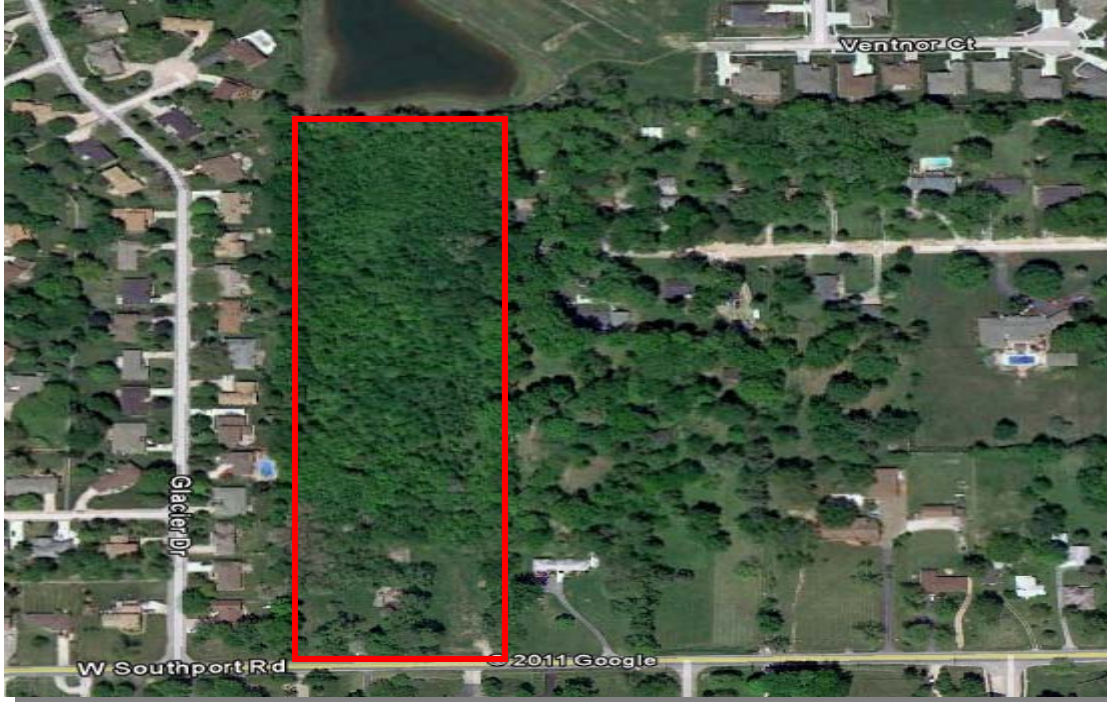


Wooded SU-1 Land For Sale
420 West Southport Road
Indianapolis, IN 46217

Base *line*

A Commercial Real Estate Company



- 10.28 acres, 335' X 1335'
- Tax ID 5004060, pay 2010 taxes \$1,647.00/year
- Zoned SU-1 religious use, possible residential use
- All utilities on site
- Secondary frontage on Jordan Road
- Great access to dining, retail & neighborhoods
- For sale: \$175,000

Kurt Meyer, CCIM
Phone 317-627-5151
kmeyer@BaselineCommercial.com
www.BaselineCommercial.com



The information contained herein was obtained from sources considered reliable. We cannot be responsible for errors, omissions, prior sale or lease, withdrawal from the market, or change in price. Seller and broker make no representation as to the environmental condition of the property and recommend purchaser's/lessee's independent investigation.

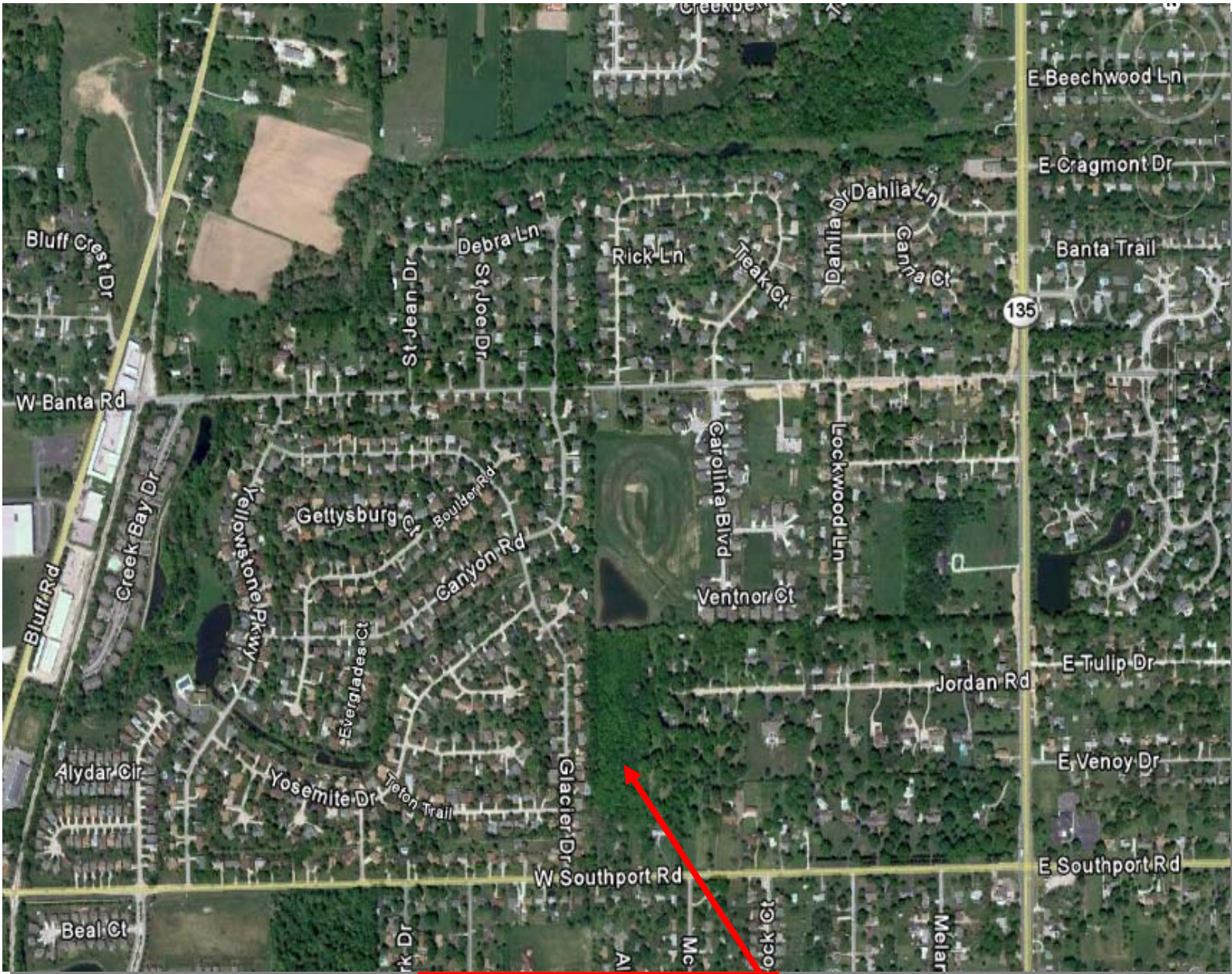


Wooded SU-1 Land For Sale
420 West Southport Road
Indianapolis, IN 46217

Base *line*

A Commercial Real Estate Company

Aerial Photo



420 W. Southport Rd



The information contained herein was obtained from sources considered reliable. We cannot be responsible for errors, omissions, prior sale or lease, withdrawal from the market, or change in price. Seller and broker make no representation as to the environmental condition of the property and recommend purchaser's/lessee's independent investigation.

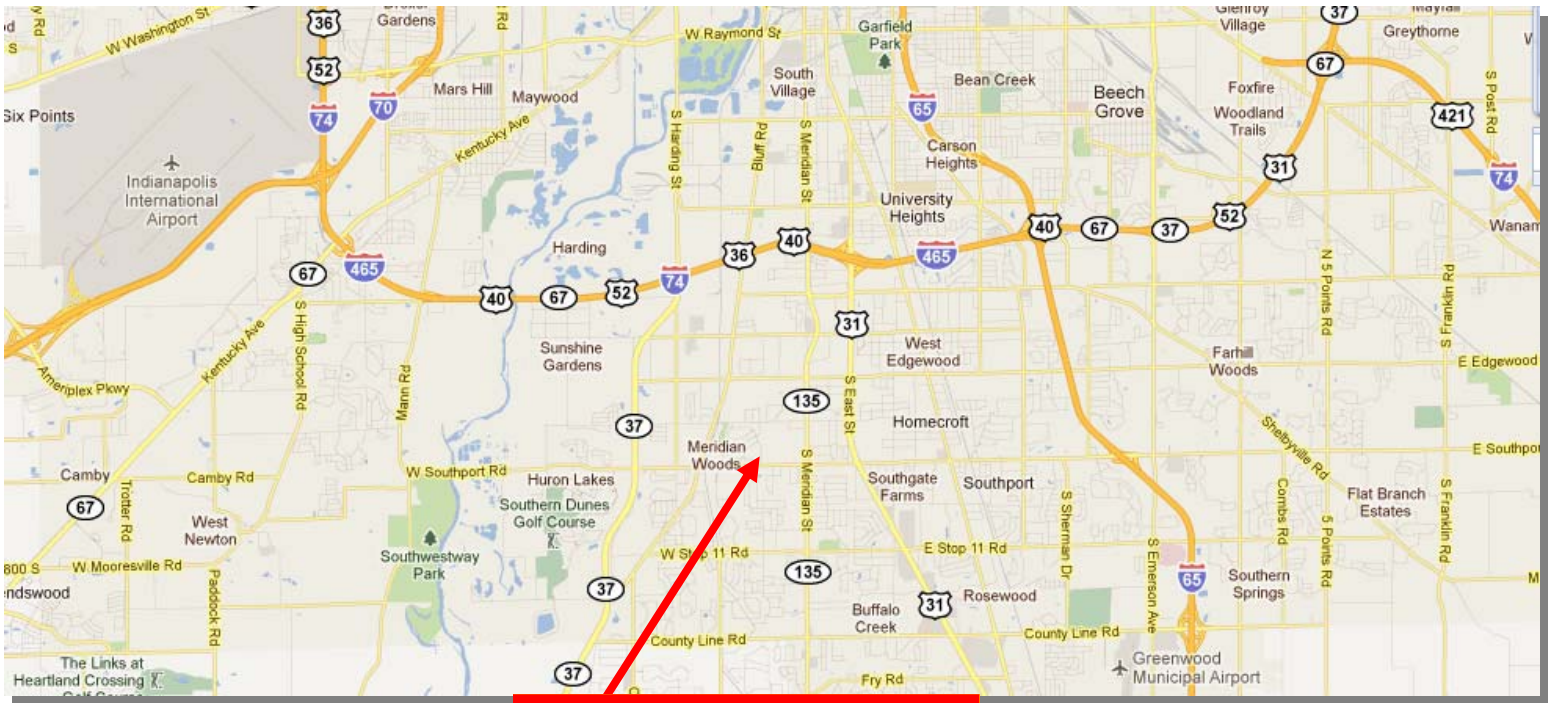


Wooded SU-1 Land For Sale
420 West Southport Road
Indianapolis, IN 46217



A Commercial Real Estate Company

Indianapolis Map



420 W. Southport Rd

MARKET DEMOGRAPHICS

	Population	Income	Households
1 Mile Radius	9,638	\$58,125	3,781
3 Mile Radius	86,392	\$66,448	34,589
5 Mile Radius	155,022	\$88,478	64,500



The information contained herein was obtained from sources considered reliable. We cannot be responsible for errors, omissions, prior sale or lease, withdrawal from the market, or change in price. Seller and broker make no representation as to the environmental condition of the property and recommend purchaser's/lessee's independent investigation.

