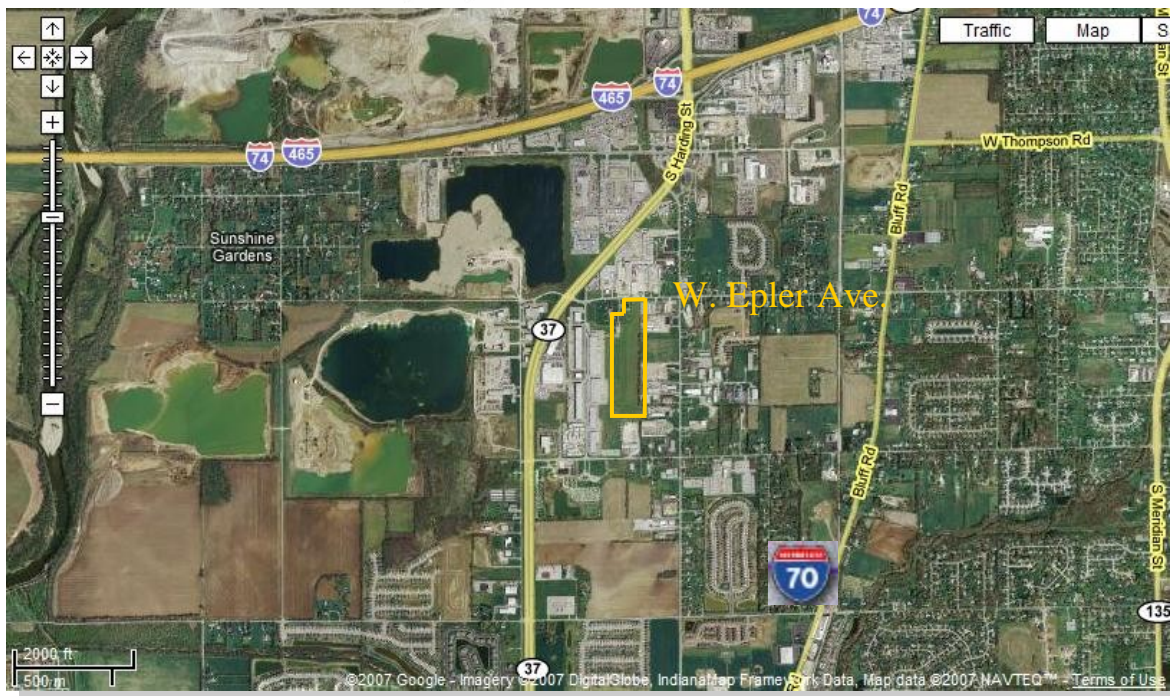


Baseline

A Commercial Real Estate Company

I-2-S Industrial Land For Sale

1705 West Epler Ave.
Indianapolis, Indiana 46217



- 13.14 acres Industrial Land
- 50,000+ vehicles per day on SR 37
- Near of I-465 & I-69 extension
- Zoned I-2-S
- Significant growth corridor
- Close to Indpls. International Airport
- For sale \$995,000 (\$75,722/acre)



Kurt Meyer, CCIM

Phone 317-579-6061

Fax 317-578-9800

Mobile 317-627-5151

kmeyer@BaselineCommercial.com

www.BaselineCommercial.com



Individual Member

The information contained herein was obtained from sources considered reliable. We cannot be responsible for errors, omissions, prior sale or lease, withdrawal from the market, or change in price. Seller and broker make no representation as to the environmental condition of the property and recommend purchaser's/lessee's independent investigation.

